



# LEGENDS VERTICAL WINDOW RETRACTABLE SCREEN KIT

SYSTEM 42 SCREEN CASSETTE WITH 30MM SIDE RAIL

## INSTALLATION INSTRUCTION

### MEASURING

Measuring and installation of your new window retractable screen is quick and simple. A typical installation involves mounting the screen housing in the recesses of the window using the recess mounting clip(s) provided. Typically this results in the screen housing simply resting within the natural profile of the window frame where it is non-invasive and virtually unnoticed.

**NOTE: Screen components must be installed on a flat surface to ensure proper operation.**

Measure the opening width and height in several places - see illustration. Record the SMALLEST width and height measurement.

Begin by identifying the location where the screen cassette housing(s) will rest. Measure the tight dimensions of the opening and record your measurements.

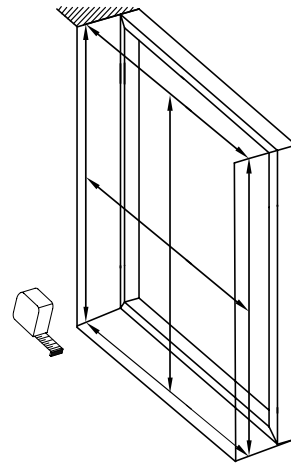
#### Dimensions for recess-mount DIY kit:

Cassette Housing: Deduct from opening width  $\frac{3}{8}$ " Before Cutting  
Side Guide Rails: Deduct from opening height  $2\text{-}\frac{1}{8}$ " Before Cutting

#### Dimensions for surface-mount DIY kit\*:

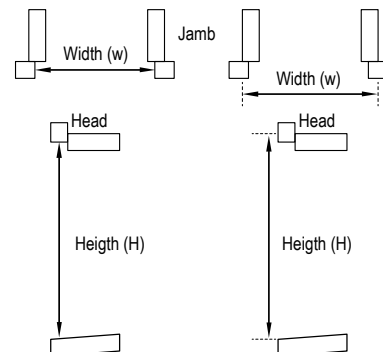
Cassette Housing: Deduct from opening width  $\frac{3}{8}$ " before cutting  
Side Guide Rails: Deduct from opening height  $1\text{-}\frac{7}{8}$ " before cutting

\*You will need at least  $\frac{1}{2}$ " of flat surface to mount the clips attached to the cassette(s). Record the width and height measurements from the outermost edge where the cassette, side rail and top/bottom tracks will rest.



Recess Installation

Surface Installation

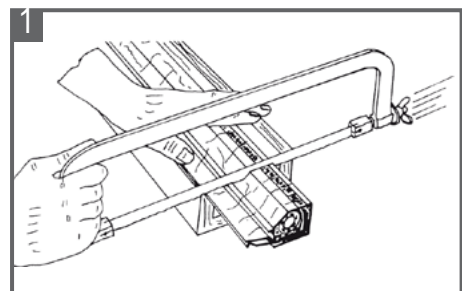


### SCREEN ASSEMBLY

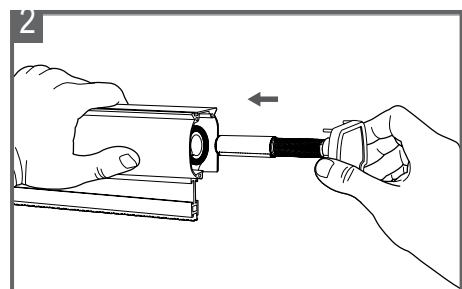
Mark the exact dimension of your cut remembering to apply the pre cutting deductions from both the screen cassette housing and the side guide rails. These deductions will account for the housing ends caps and other allowances that are required (Fig.1).

After making the cut be certain to clean away all metal shavings.

Place the housing on the table and then open the accessory kit and empty contents for assembly.

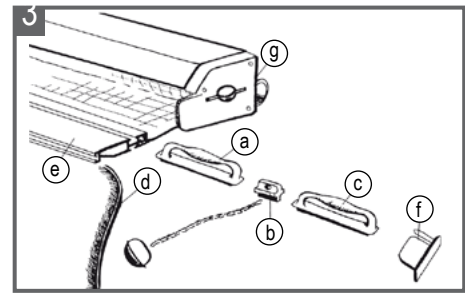


Turn your attention to the cut end of the housing. Position and insert the end cap with speed reducer and alignment bushing inside the screen tube as shown (Fig.2). Make certain to align the notch on the bushing to the internal tube groove and fully insert bushing; now, push the end cap pins into their openings, and tap evenly with a soft mallet until the end cap is flush with the end of the housing.

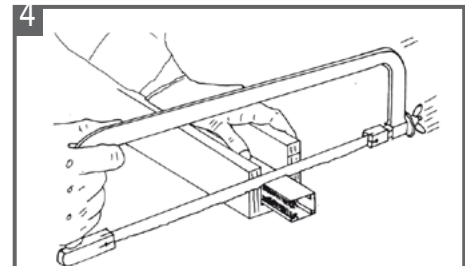


Fix it using screws (Fig.3).

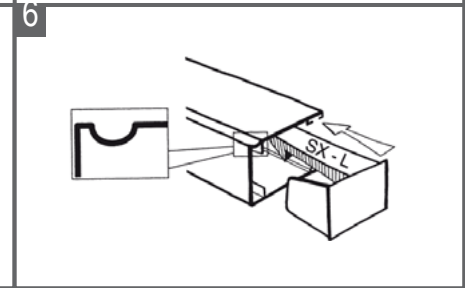
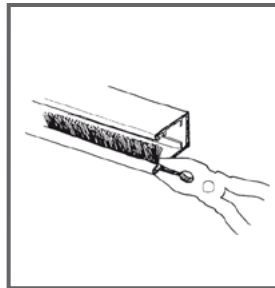
Install handles (a-c) within the side grooves of the pull rail (e), the optional pull cord (b), the bug pile within the end groove of the pullbar (d) and finally the pull bar end caps (f). If desired you may also choose to install bug pile in the groove on the back side of the screen cassette housing (g) in order to provide a barrier between the cassette and the window frame.



Next take the two side guide rails, cut them (Fig.4), crimp the very ends of each extrusion with pliers (Fig.5). Crimping these ends is critical because this will prevent the insect piling from moving within the rails. Next guide the locks (Fig. 6).



5



## INSTALLATION

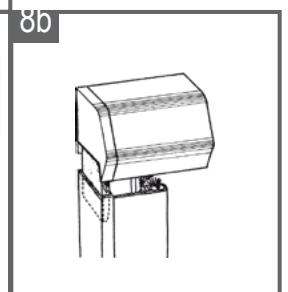
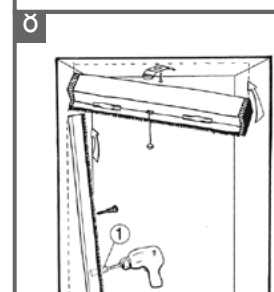
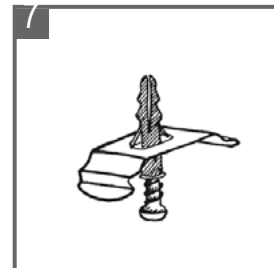
**NOTE:** It is critical that the cassette and rails be installed square and plumb in the opening. If needed use shims to square screen components in the opening.

### 1 Installing the Cassette

**1-A RECESS INSTALLATION:** Use screws to install one or two Recess Mounting Clips to the window frame (Fig. 7).

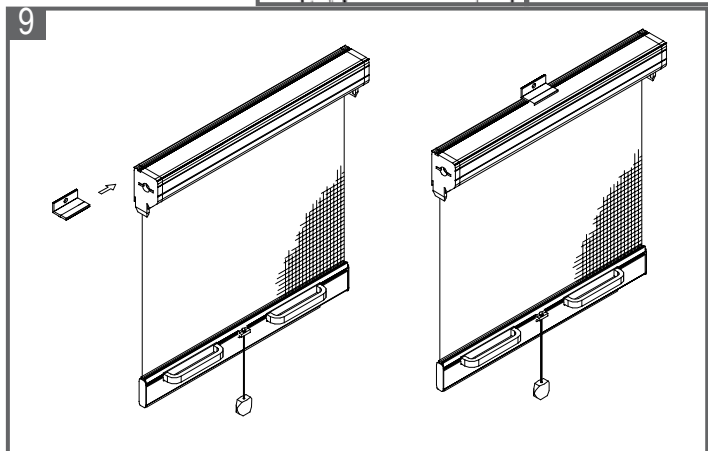
Snap the Cassette onto the mounting clips (Fig. 8).

Clip the case onto the bracket. Next the guides into the case side ends (Fig. 8b). Fix the guides onto the wall. Use the small pile opener (Fig. 10) to help you to reach the screws).



### 1-B SURFACE INSTALLATION:

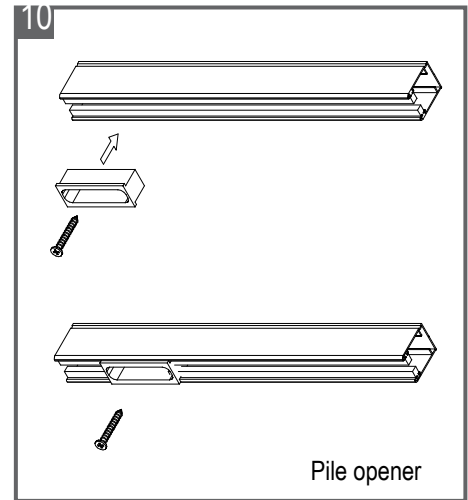
Position the cassette, insert screws in L-Clips to secure the screen cassette to the frame (Fig.9).



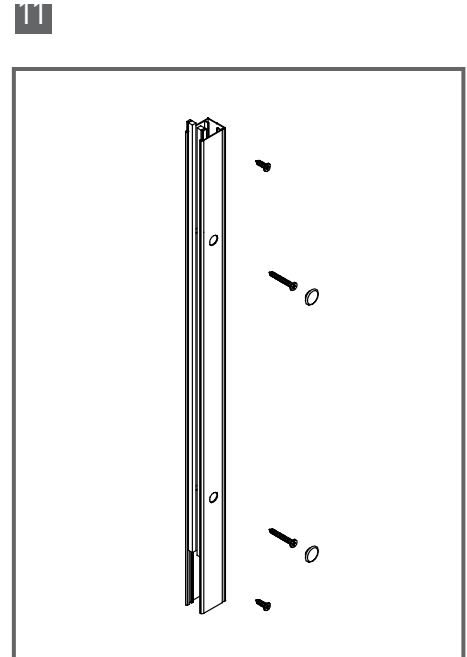
## 2 Positioning the Rail

**2-A RECESS INSTALLATION:** Grasp side rails and insert the bottom internal lock/end caps (Fig.8b). Be certain to insert the end caps on the correct side rail so that the latch engages the pull bar. Next, insert both side rails onto protruding tab of screen cassette housing end caps. Align rails plum into final position on window and fasten to frame using screws.

When installing the side guide rail it is helpful to press and slide the convenient plastic pile opener (Fig. 10) into the side guide rail to temporarily separate the insect pile which will allow you to better see and work within; this is useful when installing the screws. Remove and discard the plastic pile opener when finished.



**2-B SURFACE INSTALLATION:** Position the cassette, insert screws in L-Clips to secure the screen cassette to the frame (Fig.10). Side Guide Rail: Drill 3/8" holes evenly spaced through the face (one side only) of the rail (Fig. 11). Using these holes as a guide, drill 1/8" holes through the rear side of the rails. Using the larger 3/8" holes for access, insert screws into the 1/8" holes and secure the rails to the entry with screws. Complete the installation by inserting the rubber Plugs into access holes.



### TOOLS:

- A hand-held metal cutting saw or a 10" or larger chop saw equipped with 70 (or more), tooth Carbide tip blade for non-ferrous metals.
- Drill with appropriate tips, Drill bits – Soft Hammer – Tape Measure

**OPERATION:** During use the internal lock mechanism will automatically catch once the rollerscreen is fully extended. To retract the screen simply grasp the pull rail handle and provide a slight twisting action. Rotation of the pull rail is all that is needed to disengage the internal lock and retract the rollerscreen.

**NOTE:** Instruction illustrations are provided for instructional purposes only. The actual shape of a specific component may vary depending upon the retractable screen system.

**CAUTION!** This is not a safety or security screen. This product will not stop a child from falling, provide security or, protect your belongings. Please use eye protection when cutting and installing your screen.



This exploded view diagram illustrates the assembly of a window blind. The central component is the blind body, which includes a headrail at the top and a footrail at the bottom. The headrail features a motor or manual crank mechanism on the left side. The blind body is shown with a grid pattern, likely representing the slats. Surrounding the main assembly are various components and fasteners, including:
 

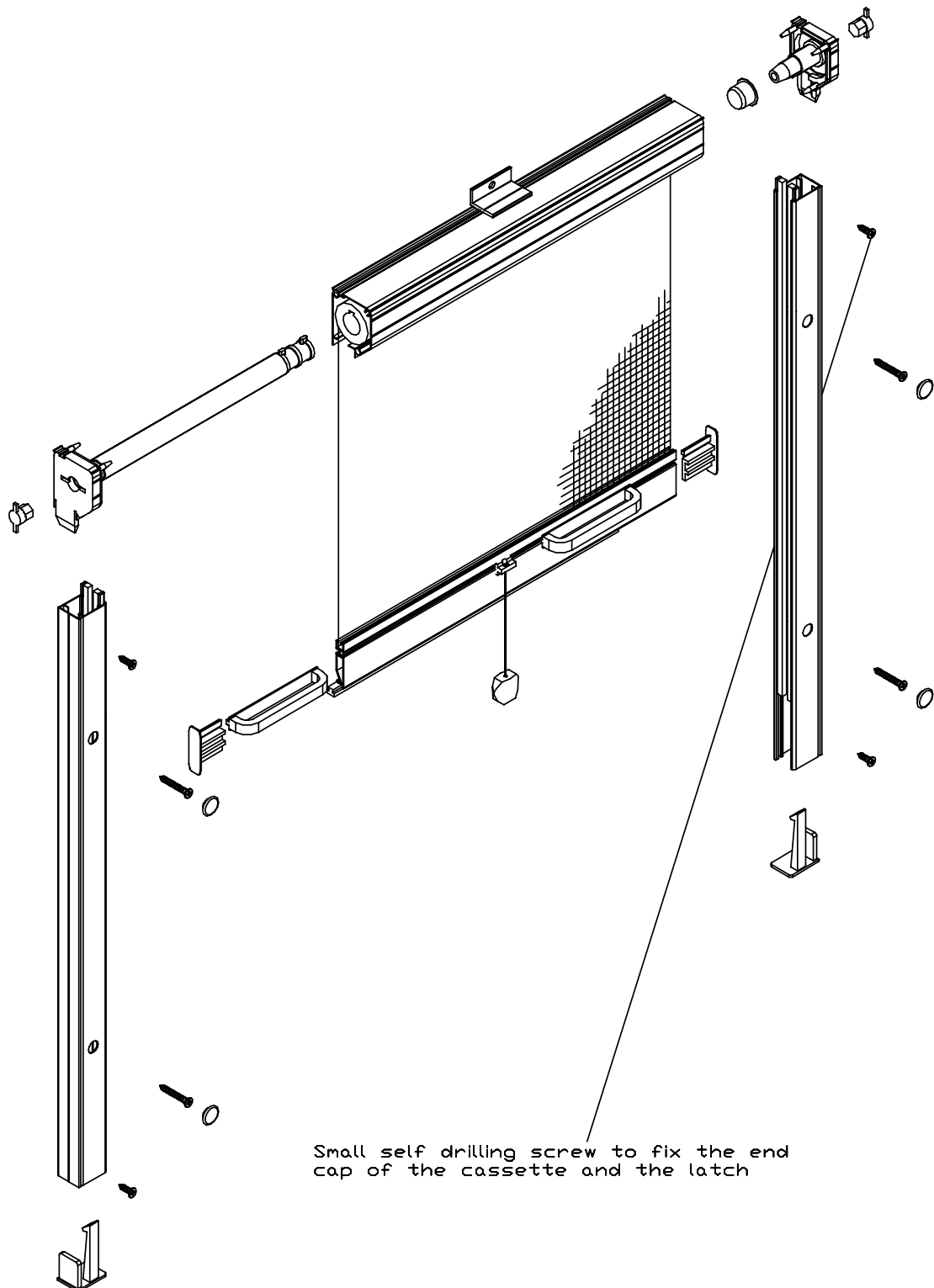
- Headrail Components:** A long horizontal bar with a motor/crank on the left, a small rectangular plate, a screw, and a small circular cap.
- Footrail Components:** A long horizontal bar with a small rectangular plate, a screw, and a small circular cap.
- Slats:** A long vertical bar with a grid pattern, shown in the center of the assembly.
- Mounting Hardware:** Various screws, brackets, and clips are shown around the main components, indicating their placement during assembly.



## LEGENDS VERTICAL WINDOW RETRACTABLE SCREEN KIT

S Y S T E M 4 2

### RECESS MOUNTING





## TROUBLESHOOTING GUIDE

It is difficult to pull the retractable screen across the opening or the retractable screen seems to bounce as it opens and closes.

Check the top and bottom guide for screws that may not have been driven flush into the guides causing the screen to drag

Clean any debris from inside the bottom guide

Make sure that the cassette housing has a 90° cut. If not, trim so it is a straight cut.

Check to insure that both end cap bushings (item "D") are fully inserted inside screen tube.

A bouncing effect is a sign that one or more bushings may not be correctly installed.

Check to see if the pull bar is rubbing and needs to be trimmed down

Check to see that the plastic pull bar end cap is gliding on the glide rails within the bottom rail track and not underneath the glide rails within the screw chamber.

The retractable screen bends or will not retract into the cassette housing properly

The retractable screen bends or will not retract into the cassette housing properly

See above steps

Make sure that the screen fabric has a clean cut and is not jagged; if so, trim so it is a straight cut

Check to see if either the housing or inner tube have been twisted, bent or otherwise damaged during shipping

Insect pile moves in the top or bottom rails

Ends of the insect pile and aluminium track need to be crimped together to prevent movement

Screen handles hit or rub on door hardware

Raise or lower the handle so that it no longer strikes the door hardware

Screen falls out of the top guide

Height measurements may be off. If the unit was cut too short, shim up along bottom.

Pull bar may be cut too short. Check measurements and consult the cutting instructions

Check to see if the floor is level and the opening is square; apply shims as needed

The door bottom threshold has a steep slope causing the retractable screen bottom guide to be on an angle when mounted

The bottom guide should always be as level as possible. Use wedge shims to adjust and for support until the bottom rail is level.

Screen is torn or damaged

Replace the mesh using a screen refill kit

The magnets of the screen do not fully seal or the screen does not close evenly

Clean the magnet using a mild soap and water

Clean any debris from inside the bottom guide. When not properly maintained, debris can accumulate and interfere with the operation of the screen as well as the screens closing and seal capabilities.